

Quaver. Debutante

Typeface Design FA'18: P1 Redesign

Quaver Serif

Quaver Serif and Quaver Sans are a family of two complimentary typefaces, one serif + one sans serif, created by Tippletype. Both contain the full character set plus ligatures creating 400 + glyphs. I fell in love with this family when creating my wedding invitations and have continued using it on my syllabi/project briefs due to its elegant, yet friendly nature.

Quaver Debutante is a swash alternates version of Quaver Serif with added contrast between the thicks and thins of each letterform to add to the drama of the swash style. It is meant to be utilized as an accent with the Quaver family as a display typeface. Once flair was added the young protege was ready to meet the world and swirl and twirl the night away in true debutante fashion.

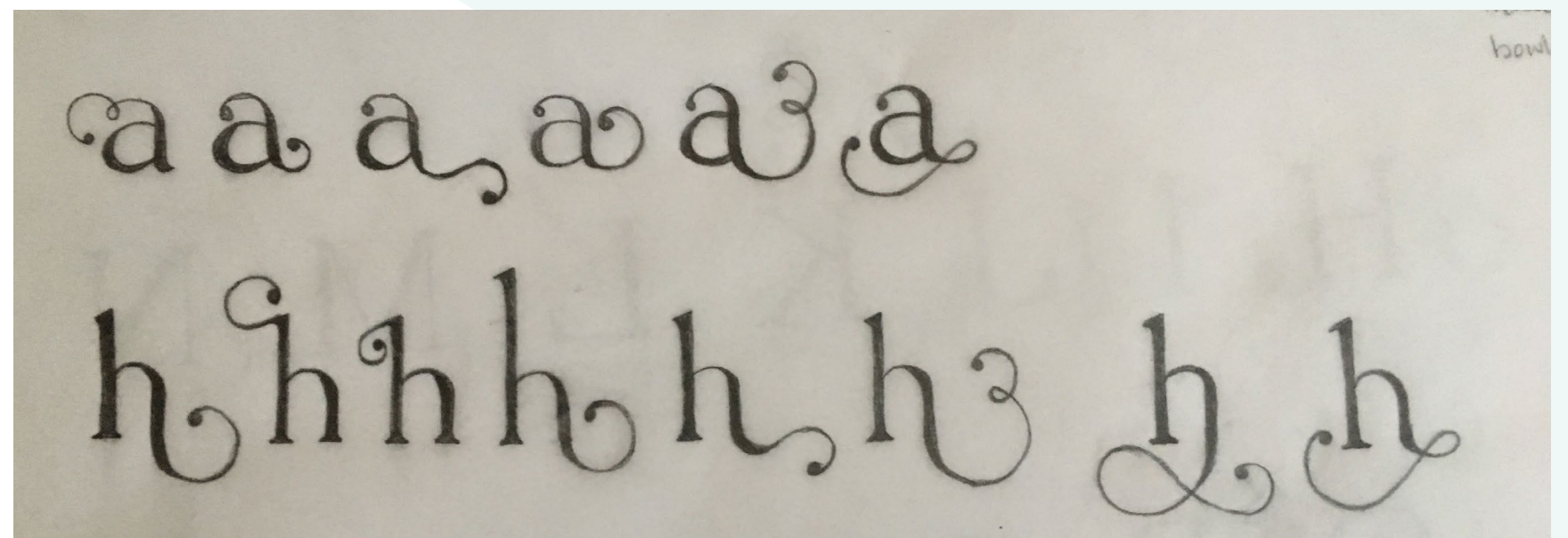
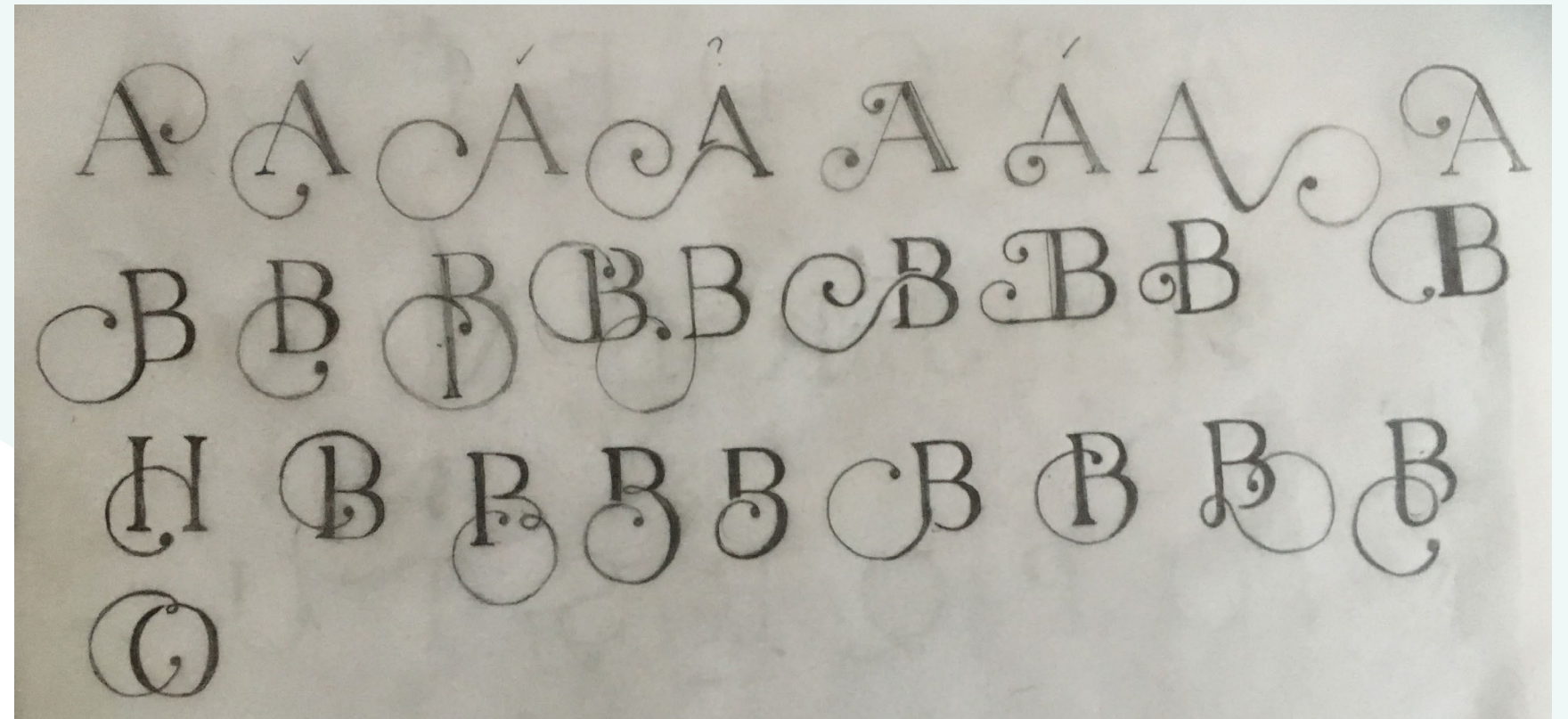
ABCDEFGHIJKLM
NOPQRSTUVWXYZ
ZÀÁÂËÎÏabcdefghijkl
mnopqrstuvwxyzàáâéê
&1234567890(\$£€.,!?)

Process

I began by sketching out all the ways a swash might be added to the serif typeface, as well as, different ways drama might be added beyond just the contrast of thick and thin. Where I landed was a starting point of meanline origin and created a set of rules from there.

Rules:

- Thicken thicks/thin the thins
- Swash left from meanline
- Geometric swash with thickness contrast
- Swash should end in a ball terminal from a thin stroke and stop at the same height across letterforms
- For further alternates, extend the left/right ascenders/descenders



A fun.
Art.
IDEA

Round 1 word play with Quaver Serif

Process

The rest of the process took place in the computer. Tweaking the thickness of letterforms, building a geometric swash, applying it, taking feedback to refine working letterforms and changing those that weren't, then refining/rebuilding the swash so it was a thin-thick-thin geometric swirl swash ending in a ball terminal on the same line.

A B H O U B C D E
F G I J K L M N P
Q S T V W X Y Z
a h o p v b c d e
f g i j k l m n q
r s t u w x y z

A B H O U R C D E
F G I J K L M N P Q
S S T T V V W W X X Y Y Z
a h o p p q r n v v
b c d e e f g i j i k l m
r s t u w w x x x x x y z

A B H O U B
C D E F G I J
K L M N P Q S
T V W X Y Z

a a h h h o p p p p
v n b c d d e e f i
g g g j j k l m m t
q q r s u w x y z

A B H O U R C D E
F G I J K L M N P Q
S T V V W X Y Y Z
A B H O U R C D E
F G I J K L M N P Q
S T V V W X Y Y Z

A Dream
is a wish
your
heart makes

Final word play with Quaver Serif